

Towards a Life-long Active Society

26 April, 2008

Atsushi Seike,
Ph.D.,
Professor of Labor Economics, Keio University

Prof. Atsushi Seike, Keio University 2008. All rights reserved.

Towards a Life-long Active Society

Contents

[I] Ageing population in Japan

- (1) Tremendous ageing population in Japan
- (2) Ageing as the result of economic growth
- (3) Necessary reforms to cope with the structural change in population

[II] The Life-long Active Society

- (1) Necessity of the promotion of employment of older workers
- (2) Strong work motivation among the elderly

[III] Necessary reforms to promote the employment beyond the current retirement age

- (1) Reform of public pension system
- (2) Reform of mandatory retirement practice
- (3) Reform of limitation in hiring

[IV] The Japan model

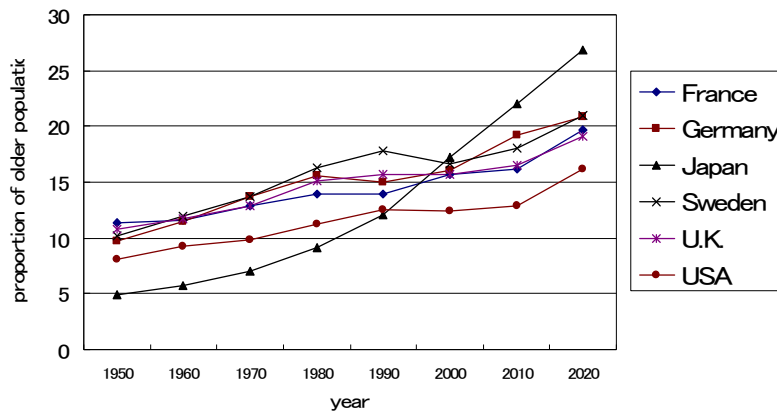
- (1) The baby boomers as an asset
- (2) Beyond the life-time employment

Prof. Atsushi Seike, Keio University 2008. All rights reserved.

No part of the contents or materials available on this presentation may be reproduced, licensed, sold, published, transmitted, modified, adapted, publicly displayed, broadcast (including storage in any medium by electronic means whether or not transiently for any purpose save as permitted herein) without the prior written permission of the author

Towards a Life-long Active Society

Figure 1 Proportion of the older population in major OECD countries

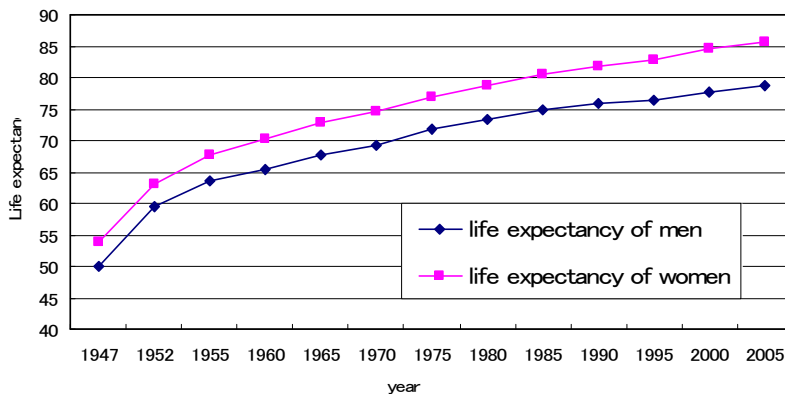


Source: National Institute of Population and Social Security Research (2005) *Latest Demographic Statistics*.

Prof. Atsushi Seike, Keio University 2008. All rights reserved.

Towards a Life-long Active Society

Figure 2 Life-expectancy of Japanese in the post-war period



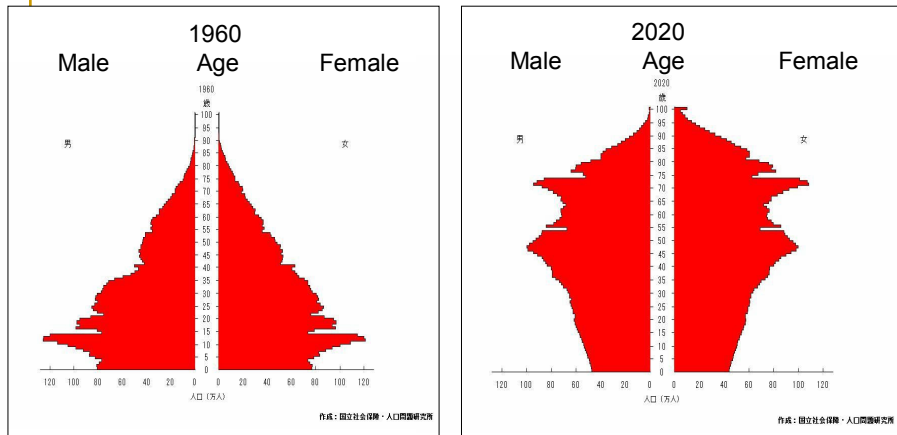
Source: National Institute of Population and Social Security Research (2005) *Latest Demographic Statistics*.

Prof. Atsushi Seike, Keio University 2008. All rights reserved.

No part of the contents or materials available on this presentation may be reproduced, licensed, sold, published, transmitted, modified, adapted, publicly displayed, broadcast (including storage in any medium by electronic means whether or not transiently for any purpose save as permitted herein) without the prior written permission of the author

Towards a Life-long Active Society

Figure 3 Population pyramid from 1960 to 2020

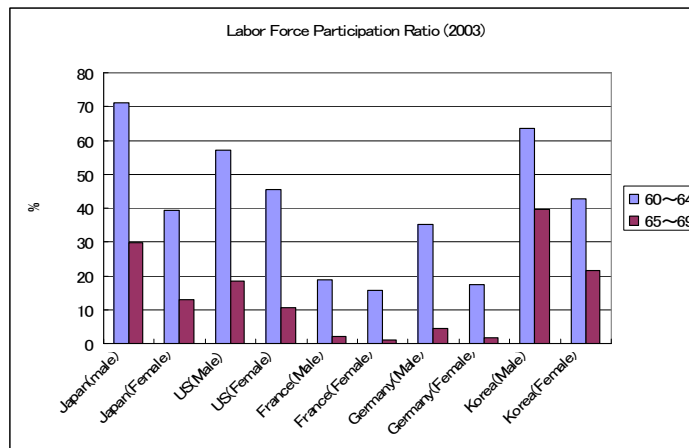


Source: National Institute of Population and Social Security Research

Prof. Atsushi Seike, Keio University 2008. All rights reserved.

Towards a Life-long Active Society

Figure 4 Labor force participation of the Elderly in major OECD countries



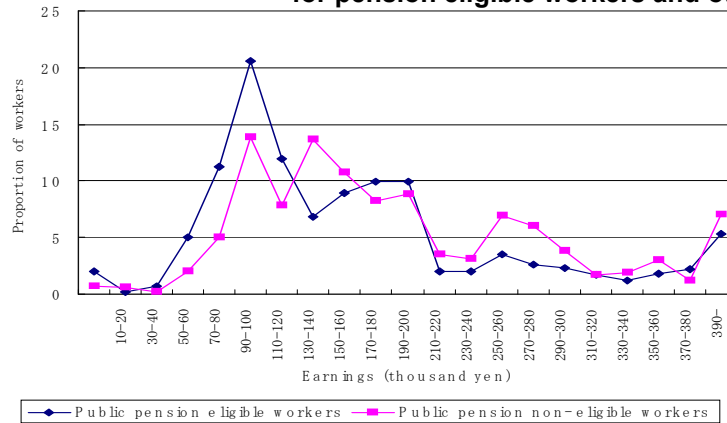
Source: ILO (2005) *Yearbook of Labor Statistics*, Geneva: ILO.

Prof. Atsushi Seike, Keio University 2008. All rights reserved.

No part of the contents or materials available on this presentation may be reproduced, licensed, sold, published, transmitted, modified, adapted, publicly displayed, broadcast (including storage in any medium by electronic means whether or not transiently for any purpose save as permitted herein) without the prior written permission of the author

Towards a Life-long Active Society

Figure 5 Earnings distributions for pension eligible workers and others

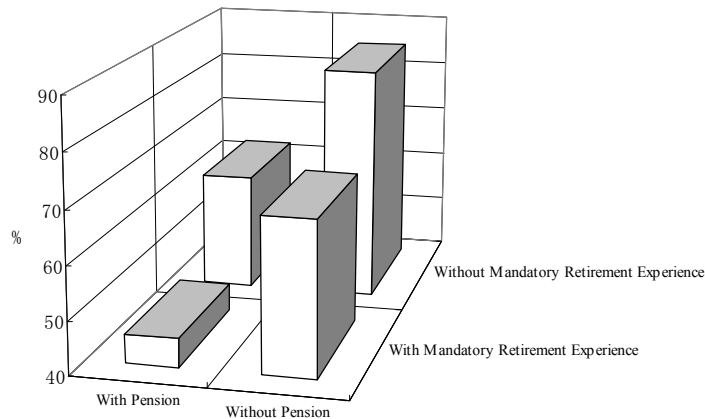


Source: Seike, Atsushi (1989) *The Effect of the Employee Pension on the Labor Supply of the Japanese Elderly*, A Rand Note, No. 2862, Santa Monica: RAND Corporation.

Prof. Atsushi Seike, Keio University 2008. All rights reserved.

Towards a Life-long Active Society

Figure 6 Proportion of workers with the same occupation as they were at age 55



Source: Seike, Atsushi and Yamada, Atsuhiko (2004)

Koreisya Shugyo no Keizaigaku (The Economics of Older Workers), Nihon Keizai Shinbunsha.

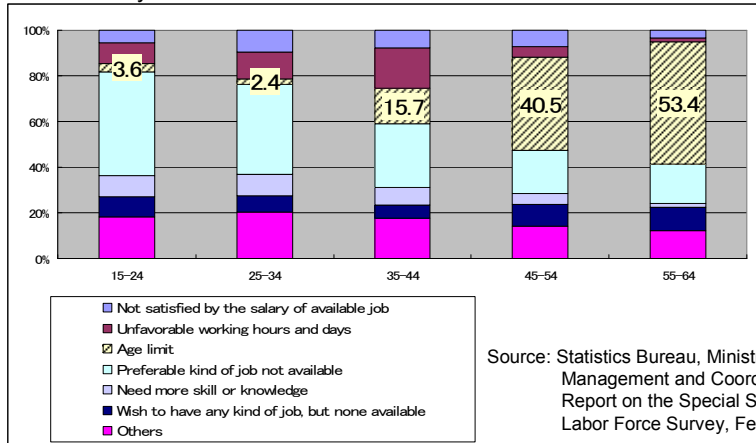
Prof. Atsushi Seike, Keio University 2008. All rights reserved.

No part of the contents or materials available on this presentation may be reproduced, licensed, sold, published, transmitted, modified, adapted, publicly displayed, broadcast (including storage in any medium by electronic means whether or not transiently for any purpose save as permitted herein) without the prior written permission of the author

Towards a Life-long Active Society

Figure 7. Proportion of unemployed persons by reasons of failure to find a job

February 2005



Source: Statistics Bureau, Ministry of Management and Coordination, Report on the Special Survey of the Labor Force Survey, February 2005.

Prof. Atsushi Seike, Keio University 2008. All rights reserved.